

Iron Baltic



ATV & UTV ACCESSORIES



2014

ALUMINIUM SKID PLATES

Material Corrosion resistant, brushed aluminium alloy
Thickness 4mm
Info Full protection of bottom and front part of the ATV.
 Rib shaped openings for mud draining & easier washing.
 Holes for oil changing.
 Holes for snow plow mounting kit.
 Fastening parts and instructions are enclosed.



Access	Code	Price (EUR)
AX 700 4x4 EFI	02.11400	415,00
Arctic Cat	Code	Price (EUR)
500	02.9400	415,00
500 XT	02.9400	415,00
550i	02.9400	415,00
550i XT	02.9400	415,00
700	02.9400	415,00
700 XT	02.9400	415,00
550i Limited	02.11800	415,00
700 Limited	02.11800	415,00
700 MudPro Limited	02.11800	415,00
1000 XT	02.2000	415,00
TRV 500	02.6600	415,00
TRV 550 XT	02.6600	415,00
TRV 550 Limited	02.6600	415,00
TRV 700 XT	02.6600	415,00
TRV 700 Diesel	02.6600	415,00
TRV 700 Limited	02.6600	415,00
TRV 1000 Limited	02.11200	415,00
TRV 1000 MudPro Limited	02.11200	415,00
1000i Wildcat	02.9800	600,00

BRP Can-Am	Code	Price (EUR)
Outlander 500	02.6300	425,00
Outlander 500 MAX	02.6000	440,00
Outlander 500 G2	02.8400	425,00
Outlander 500 MAX G2	02.10000	440,00
Outlander 650	02.6300	425,00
Outlander 650 MAX	02.6000	440,00
Outlander 650 G2	02.8400	425,00
Outlander 650 MAX G2	02.10000	440,00
Outlander 650 Xmr G2	02.8400	425,00
Outlander 800R	02.6300	425,00
Outlander 800R MAX	02.6000	440,00
Outlander 800R G2	02.8400	425,00
Outlander 800R MAX G2	02.10000	440,00
Outlander 1000 G2	02.8400	425,00
Outlander 1000 Xmr G2	02.10000	440,00
Outlander 1000 MAX	02.10000	440,00
Renegade 500	02.6900	440,00
Renegade 500 G2	02.8200	425,00
Renegade 800R	02.6900	440,00
Renegade 800R G2	02.8200	425,00
Renegade 1000 G2	02.8200	425,00
Commander 800R	02.8900	523,33
Commander 1000	02.8900	523,33
Maverick 1000	02.12200	633,33

Ceatek	Code	Price (EUR)
500 EFI Gladiator	02.2200	440,00
500 EFI Quadrift	02.2200	440,00
500 EFI KingCobra	02.3020	440,00
CFMOTO	Code	Price (EUR)
500 - 2 (short models)	02.1080	415,00
500 - 2A (long models)	02.1070	433,33
CFORCE 500 (X5 short models)	02.6400	425,00
CFORCE 500 (X5 long models)	02.6100	433,33
CFORCE 600 (X6 short models)	02.6400	425,00
CFORCE 600 (X6 long models)	02.6100	433,33
CFORCE 800 (X8)	02.8700	425,00
CFORCE 800 LUX (X8 Lux)	02.9200	425,00
ZFORCE 600 (Z6)	02.5700	540,00
ZFORCE 800 EX (Z8 EX)	02.13600	491,67
UFORCE 800 (800 Tracker)	02.10700	523,33
Dinli	Code	Price (EUR)
600 Prime	02.4400	415,00
DL700	02.1980	415,00
DL702	02.4400	415,00
DL702L	02.7200	433,33
DL704	02.2500	415,00
DL703	02.6500	415,00
GOES	Code	Price (EUR)
520	02.7900	425,00
520 MAX	02.7800	433,33
525	02.5100	425,00
525 MAX	02.5000	433,33
625	02.5100	425,00
625 MAX	02.5000	433,33
HISUN	Code	Price (EUR)
400cc	02.1300	275,00
700 UTV	02.8600	510,00
Honda	Code	Price (EUR)
TRX 420 FA (... - 2013)	02.3100.	440,00
TRX 420 FE / FM (... - 2013)	02.1200	425,00
TRX 420 FA / FE / FM (2014 - ...)	02.13000	433,33
TRX 500 FA	02.900	415,00
TRX 500 FE (... - 2012)	02.900	415,00
TRX 500 FE (2012 - 2013)	02.7400	415,00
TRX 500 FE (2014 - ...)	02.13400	433,33
TRX 650 Rincon	02.1010	415,00
TRX 680 Rincon	02.1010	415,00
Kawasaki	Code	Price (EUR)
KVF650 BruteForce 4x4 Rigid	02.450	415,00
KVF750 BruteForce 4x4	02.400	415,00
Kymco	Code	Price (EUR)
MXU 500	02.1180	415,00
Linhai	Code	Price (EUR)
400	02.3550	415,00
400 IRS	02.5250	415,00
550 EFI V-Twin	02.12000	415,00
600 EFI	02.12700	415,00
Keeway (Leone Mastiff)	Code	Price (EUR)
Leone Mastiff XY 500	02.10300	415,00

Polaris	Code	Price (EUR)
400 Sportsman (2011 - ...)	02.5600	440,00
500 Sportsman (... - 2010)	02.2300	440,00
500 Sportsman (2011 - ...)	02.5600	440,00
570 Sportsman	02.12500	440,00
800 Sportsman (... - 2010)	02.1400	440,00
800 Sportsman (2011 - ...)	02.5600	440,00
800 X2 Sportsman	02.1600	483,33
550 XP Sportsman	02.1520	440,00
850 XP Sportsman	02.1520	440,00
550 XP X2	02.5500	440,00
850 XP X2	02.5500	440,00
850 Scrambler	02.10200	433,33
800 RZR	02.4000	540,00
800 RZR S	02.4200	550,00
800 BigBoss	02.9600	510,00
900 RZR XP	02.7500	575,00
EV Ranger	02.7000	550,00
400 Ranger	02.7000	550,00
800 Ranger	02.8000	575,00
900 XP Ranger	02.12300	575,00
900 Diesel Ranger	02.8000	575,00
Suzuki	Code	Price (EUR)
400 Eiger	02.200	415,00
LT-A 450 KingQuad	02.800	415,00
LT-A 500 KingQuad	02.800	415,00
LT-A 700 KingQuad	02.800	415,00
LT-A 750 KingQuad	02.800	415,00
LT-A 500 AXi KingQuad EPS	02.4800	415,00
LT-A 750 AXi KingQuad EPS	02.4800	415,00
SYM	Code	Price (EUR)
600 QuadRider / QuadLander	02.1190	440,00
TGB	Code	Price (EUR)
425 Blade	02.4600	415,00
Yamaha	Code	Price (EUR)
450 Grizzly (2006 - 2008)	02.1000	415,00
450 Grizzly (2009 - 2010) not EPS	02.3120	415,00
550 Grizzly	02.700	415,00
660 Grizzly	02.500	415,00
700 Grizzly (... - 2013)	02.700	415,00
700 Grizzly (2014 - ...)	02.13100	415,00



PLASTIC SKID PLATES

Material Plastic (HDPE) - black
Thickness 10mm
Info Full protection of bottom and front part of the ATV.
 Rib shaped openings for mud draining & easier washing.
 Holes for oil changing.
 Holes for snow plow mounting kit.
 Fastening parts and instructions are enclosed.



Access	Code	Price (EUR)
AX 700 4x4 EFI	02.11500	375,00
Arctic Cat	Code	Price (EUR)
500	02.9500	375,00
500 XT	02.9500	375,00
550i	02.9500	375,00
550i XT	02.9500	375,00
700	02.9500	375,00
700 XT	02.9500	375,00
550i Limited	02.11900	375,00
700 Limited	02.11900	375,00
700 MudPro Limited	02.11900	375,00
1000 XT	02.9100	375,00
TRV 500	02.11100	375,00
TRV 550 XT	02.11100	375,00
TRV 550 Limited	02.11100	375,00
TRV 700 XT	02.11100	375,00
TRV 700 Diesel	02.11100	375,00
TRV 700 Limited	02.11100	375,00
TRV 1000 Limited	02.11300	375,00
TRV 1000 MudPro Limited	02.11300	375,00

BRP Can-Am	Code	Price (EUR)
Outlander 500	02.1530	375,00
Outlander 500 MAX	02.1750	383,33
Outlander 500 G2	02.8500	400,00
Outlander 500 MAX G2	02.10100	408,33
Outlander 650	02.1530	375,00
Outlander 650 MAX	02.1750	383,33
Outlander 650 G2	02.8500	400,00
Outlander 650 MAX G2	02.10100	408,33
Outlander 650 Xmr G2	02.8500	400,00
Outlander 800R	02.1530	375,00
Outlander 800R MAX	02.1750	383,33
Outlander 800R G2	02.8500	400,00
Outlander 800R MAX G2	02.10100	408,33
Outlander 1000 G2	02.8500	400,00
Outlander 1000 Xmr G2	02.10100	408,33
Outlander 1000 MAX	02.10100	408,33
Renegade 500	02.1610	375,00
Renegade 500 G2	02.8300	400,00
Renegade 800R	02.1610	375,00
Renegade 800R G2	02.8300	400,00
Renegade 1000 G2	02.8300	400,00

Ceatek	Code	Price (EUR)
500 EFI Gladiator	02.4700	375,00
500 EFI Quadrift	02.4700	375,00
500 EFI KingCobra	02.9000	390,00
CFMOTO	Code	Price (EUR)
500 - 2 (short models)	02.1140	356,67
500 - 2A (long models)	02.1130	375,00
CFORCE 500 (X5 short models)	02.2850	356,67
CFORCE 500 (X5 long models)	02.2800	375,00
CFORCE 600 (X6 short models)	02.2850	356,67
CFORCE 600 (X6 long models)	02.2800	375,00
CFORCE 800 (X8)	02.8800	390,00
CFORCE 800 LUX (X8 Lux)	02.9300	390,00
ZFORCE 600 (Z6)	02.5900	466,67
ZFORCE 800 EX (Z8 EX)	02.13600	491,67
UFORCE 800 (800 Tracker)	02.10800	491,67
Dinli	Code	Price (EUR)
600 Prime	02.4500	375,00
DL700	02.3150	375,00
DL702	02.4500	375,00
DL703	02.7300	375,00
GOES	Code	Price (EUR)
520	02.10500	356,67
520 MAX	02.10900	375,00
525	02.6200	356,67
525 MAX	01.11000	375,00
625	02.6200	356,67
625 MAX	01.11000	375,00
Honda	Code	Price (EUR)
TRX 420 FA (... - 2013)	03.3400	375,00
TRX 420 FE / FM (... - 2013)	02.1800	375,00
TRX 420 FA / FE / FM (2014 - ...)	02.13300	408,33
TRX 500 FA	02.1120	390,00
TRX 500 FE (... - 2012)	02.1120	390,00
TRX 500 FE (2012 - 2013)	02.7700	375,00
TRX 500 FE (2014 - ...)	02.13500	408,33
TRX 650 Rincon	02.1110	390,00
TRX 680 Rincon	02.1110	390,00
Kawasaki	Code	Price (EUR)
KVF650 BruteForce 4x4 Rigid	02.480	355,00
KVF750 BruteForce 4x4	02.1150	390,00
Kymco	Code	Price (EUR)
MXU 500	02.1850	375,00
Linhai	Code	Price (EUR)
400	02.3500	375,00
400 IRS	02.5200	375,00
550 EFI V-Twin	02.12100	375,00
600 EFI	02.12800	375,00
Keeway (Leone Mastiff)	Code	Price (EUR)
Leone Mastiff XY 500	02.10600	375,00

Polaris	Code	Price (EUR)
400 Sportsman (2011 - ...)	02.5800	400,00
500 Sportsman (... - 2010)	02.2350	400,00
500 Sportsman (2011 - ...)	02.5800	400,00
570 Sportsman	02.12600	400,00
800 Sportsman (... - 2010)	02.1410	400,00
800 Sportsman (2011 - ...)	02.5800	400,00
800 X2 Sportsman	02.1650	425,00
550 XP Sportsman	02.1540	400,00
850 XP Sportsman	02.1540	400,00
550 XP X2	02.5400	405,00
850 XP X2	02.5400	405,00
850 Scrambler	02.10400	400,00
800 RZR	02.4100	466,67
800 RZR S	02.4300	485,00
800 BigBoss	02.9700	466,67
900 RZR XP	02.7600	523,33
EV Ranger	02.7100	510,00
400 Ranger	02.7100	510,00
570 Ranger	02.12900	533,33
800 Ranger	02.8100	523,33
900 XP Ranger	02.12400	533,33
900 Diesel Ranger	02.8100	523,33
Suzuki	Code	Price (EUR)
LT-A 450 KingQuad	02.1160	400,00
LT-A 500 KingQuad	02.1160	400,00
LT-A 700 KingQuad	02.1160	400,00
LT-A 750 KingQuad	02.1160	400,00
LT-A 500 AXi KingQuad EPS	02.4900	400,00
LT-A 750 AXi KingQuad EPS	02.4900	400,00
SYM	Code	Price (EUR)
600 QuadRider / QuadLander	02.1890	375,00
Yamaha	Code	Price (EUR)
450 Grizzly (2006 - 2008)	02.1960	375,00
450 Grizzly (2009 - 2010) not EPS	02.3010	375,00
550 Grizzly	02.1170	400,00
660 Grizzly	02.2900	375,00
700 Grizzly (... - 2013)	02.1170	400,00
700 Grizzly (2014 - ...)	02.13200	400,00



STRAIGHT PLOWS

Material Steel, powder-coated
Weight From 34kg
Height 450mm
Length From 1280mm to 1800mm (+additional extensions)

Info Impact reducing springs.
 Double-sided blade (steel).
 5 different working angle positions (quick & easy adjustment).
 Working height adjustment.

Wide range of model specific mounting kits available (see section snow plow mounting kits).



STRAIGHT PLOWS	Code	Price (EUR)
Blade 1280mm + push tubes kit	04.1000	395,83
Blade 1500mm + push tubes kit	04.2000	415,00
Blade 1800mm + push tubes kit	04.3000	491,67
Blade 1500mm + extended push tubes for tracks fitted ATV	04.4000	451,67
Blade 1800mm + extended push tubes for tracks fitted ATV	04.5000	528,33
Blade 1500mm + Side wings + extended push tubes for tracks fitted ATV	04.6000	526,67
Blade 1800mm + Side wings + extended push tubes for tracks fitted ATV	04.7000	603,33

TAPERED PLOWS

Material Steel, powder-coated
Weight 48kg
Height 400...500mm
Length 1500mm

Info Impact reducing springs.
 Double-sided blade (steel).
 5 different working angle positions (quick & easy adjustment).
 Working height adjustment.

Wide range of model specific mounting kits available (see section snow plow mounting kits).



TAPERED PLOWS	Code	Price (EUR)
Tapered plow 1500mm + push tubes kit	04.14000	540,83
Tapered plow 1500mm + extended push tubes for tracks fitted ATV	04.15000	577,50

V-PLOWS

Material Steel, powder-coated
Weight 65kg ... 80kg
Height 450
Length 1520mm ... 1800mm

Info Heavy duty steel construction, suitable for clearing snow or pushing sand, dirt, gravel, etc.
 The snow plow has 8 different working angle positions.
 Impact reducing double springs helps the plow move over small obstacles without breaking.
 Plow lifting with ATV winch.

Wide range of model specific mounting kits available (see section snow plow mounting kits).



V-PLOWS	Code	Price (EUR)
V-plow 1520mm + push tubes kit	04.8000	741,67
V-plow 1520mm + extended push tubes for tracks fitted ATV	04.9000	791,67
V-plow 1800mm + push tubes kit (suitable for UTV use)	04.16000	825,00

PUSH BROOM

Material Steel, plastic brushes (polypropylene)
Weight 45kg
Height: 300mm
Length 1500mm
Surface Powder-coated, black
Info Push Broom is suitable for the toughest sweeping conditions, cleaning agricultural, commercial and industrial debris, rubbish, leaves and even snow, withstanding water and industrial spills effectively.

Push Broom is perfect for maintaining hard surface trails, sidewalks and sweeping out storage or pole buildings.

Wide range of model specific mounting kits.



PUSH BROOMS	Code	Price (EUR)
Push broom 1500mm + push tubes kit	04.14000	540,83
Push broom 1500mm + extended push tubes for tracks fitted ATV	04.15000	577,50

Accessories

Parts list	Product code	Price (EUR)
Plow blade 1280mm	04.100	187,50
Plow blade 1500mm	04.300	206,67
Plow blade 1800mm	04.800	283,33
Tapered plow blade 1500mm	20.3000	248,33
Push broom 1500mm	20.1000	332,50
Push tubes	04.200	208,33
Push tubes for tracks fitted ATV	04.700	245,00
Rubber lip 1280mm	04.400	55,00
Rubber lip 1500mm	04.500	55,00
Blade side extensions, pair	04.600	75,00
Universal mounting kit	03.4000	75,00
Blade markers (antennas), pair	20.4000	20,00



STRAIGHT PLOW BLADES

Material Steel
Width 1280mm / 1500mm / 1800mm
Height 450mm
Weight 23kg / 27kg / 35kg



RUBBER LIPS

Material Rubber 20mm + steel fixing bracket
Length 1280mm / 1500mm
Width 50mm



TAPERED PLOW BLADES

Material Steel
Width 1500mm
Height 400mm - 500mm
Weight 30kg



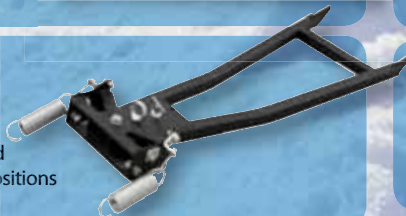
UNIVERSAL MOUNTING KIT

Material Steel
Weight 7kg
 Multi directionally adjustable mounting points to the ATV frame. Fits most ATVs, reducing need for vehicle specific plow mounts.



PUSH TUBES

Material Steel
Weight 17.5kg
 Impact reducing springs and 5 different working angle positions (quick & easy adjustment).



BLADE SIDE EXTENSIONS

Extends the working width by 150mm. Suitable for straight snow blades.



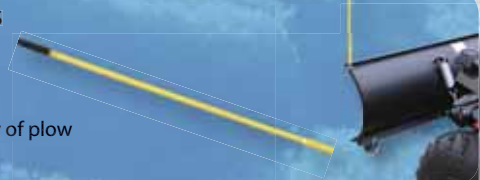
PUSH BROOM

Material Steel / plastic brushes (polypropylene)
Width 1500mm
Height 300mm
Weight 27kg



BLADE MARKERS (ANTENNAS)

Length 725mm / thickness 10mm
 Increases visibility of plow edges for safety.



UNIVERSAL SKI SLED

Material	Galvanized / powder-coated steel
Dimensions	Platform: width 800mm x length 2250mm Sled total: width 1000mm x length 2800mm x height 850mm
Packed dimensions	Width 850mm x length 2300mm x height 200mm
Runner skis	2 x 1750mm x 180mm
Weight	50 kg
Load capacity	200 kg
Other information	360 degrees rotating universal hitch coupling for ATVs and snowmobiles. Platform ground clearance - 300mm. Plywood platform. Shock absorbers for skis.



Product	Code	Price (EUR)
Universal ski sled	41.0000	440,00

TIMBER SKI SLED

Material	Galvanized / powder-coated steel
Dimensions	Cargo frames: 2 x width 750mm x height 850mm Sled total: width 870mm x length 4600-5000mm x height 850mm
Packed dimensions	Width 750mm x length 1800mm x height 500mm
Runner skis	4 x 1750mm x 180mm
Weight	100 kg
Load capacity	500 kg
Other information	360 degrees rotating universal hitch coupling for ATVs and snowmobiles. Suitable for logs up to 5 m long. Adjustable cargo frame distance (2500mm - 2900mm). Removable cargo frame. Cargo straps included.



Product	Code	Price (EUR)
Timber ski sled	42.0000	575,00

SNOW SLED

Material	Plastic PE-HWU 8mm
Dimensions (sled cargo box)	Width 1200mm x length 2900mm x height 200mm
Info	Sled can be used with all ATV-s, UTV-s and snowmobiles with the rear hitch to carry almost anything. Sleds are manufactured with 8mm polyethylene PE-HWU, which is lightweight (total weight of the sled is 50kg), UV-resistant, flexible, slippery, and durable even in Arctic temperatures as low as -50°C.



Product	Code	Price (EUR)
Universal ski sled	22.0000	600,00

TRAILER SKIS FOR 1-AXLE TRAILER

Material	Steel & plastic
Dimensions	Length 1440mm Width 250mm Height 220mm Weight 32kg/pair
Surface finish	Powder-coated, black
Packed dimensions	(LxWxH) 1160mm x 250mm x 370mm
Info	Skis for 1-axle trailers. Steel bar construction, plastic sliding parts. Special guides under the skid to prevent sliding sideways. The kit consists of 2 skis, fixing rope/ties and detailed step-by-step fitting instructions.

Product	Code	Price (EUR)
Trailer ski kit (pair) for 1-axle trailer	29.100	450,00



WINTER

TRAILER SKIS FOR 2-AXLE TRAILER

Material	Steel & plastic
Dimensions	Length 2100mm Width 250mm Height 220mm Weight 45kg/pair
Surface finish	Powder-coated, black
Packed dimensions	(LxWxH) 1800mm x 250mm x 370mm
Info	Skis for 2-axle trailers. Steel bar construction, plastic sliding parts. Special guides under the skid to prevent sliding sideways. The kit consists of 2 skis, fixing rope/ties and detailed step-by-step fitting instructions.

Product	Code	Price (EUR)
Trailer ski kit (pair) for 2-axle trailer	29.200	491,67



SKIS FOR 1-AXLE ATV TRAILER

Material	Steel & plastic
Dimensions	Length 1500mm Width 250mm Height 400mm Weight 40kg/pair
Surface finish	Powder-coated, black
Packed dimensions	(LxWxH) 1800mm x 250mm x 370mm
Info	Skis for 1-axle ATV trailers. Fitment for 4x100 wheel bolt pattern. Steel bar construction, plastic sliding parts. Special guides under the skid to prevent sliding sideways.

Product	Code	Price (EUR)
SKIS (pair) for 1-axle ATV trailer	29.300	390,83



SNOW BLOWER

Material	Powder-coated steel
Dimensions (assembled)	width 1250mm x height 1000mm x adjustable length 2400mm - 3500mm
Packed dimensions	width 1500mm x height 1000mm x length 1200mm
Working width & height	1250mm x 500mm
Weight	200 kg
Engine	13HP Honda GX390 (Iron Blower Light) 18HP Briggs & Stratton V-Twin Vanguard (Iron Blower PRO V2)
Snow ejection	The direction tube is electrically adjustable via a control panel, ejection 15 m.
Push frame	Telescopic mounting / push frame, with adjustable length 1600mm - 2600mm.
Working speed	up to 5 km/h recommended
Additional features	CE- certificate Comes with installation and user manuals. Universal telescopic adjustable, strong square tube push frame allows installation to most 4x4 ATV machines. The push frame is fixed to the rear hitch ball and with the adjustable chains to the ATV front arms. Installation takes 5-10 minutes. 360 degrees rotating wheel carriers with 4" wheels to carry the weight of the snow blower. An ATV is used only to push the machine. Control panel for ejection tube movement with stop button to shut off the blower engine. Working position and transportation position (set with ATV winch). Easy to use belt tensioner, fast removal and installation of the clutch belt, if needed. Protective shaft bolts against excess load in rotor shaft movement.

Product	Code	Price (EUR)
"Iron Blower Light" 13HP (Honda GX390)	30.1000	3325,00
"Iron Blower PRO V2" 18HP (B&S V-Twin Vanguard)	30.2000	3741,67

An ATV front mounted winch (min 1500lbs) and rear hitch-ball needed for installing the snow blower!



SKI TRACK MAKER "TRACKER 230"

Working width 2300mm (1800mm without extensions)
Width of the classic track 230mm
Dimensions of the product Width 2300mm x Height 670mm x Lenght 3550mm
Packaging dimensions Width 500mm x Height 600mm x Lenght 1800mm
Weight ca 150kg
Info The ski track maker is meant for the preparation and grooming of ski tracks.
 The classic track setter can be adjusted to three different positions (it is also possible to mount three adjacent classic track setters).
 Easily adjustable ice blade for the later grooming of the ski track.
 Possibility to mount additional weights (sandbags etc.) for more efficient snow compression.
 Support wheels for the transporting position. In the transporting position, the height of the equipment from the ground is 200 mm.
 Can be hitched to an ATV (preferably a tracked ATV), a snowmobile or a compact tractor.
 The product comes with detailed assembly and user manuals.



WINTER

Product	Code	Price (EUR)
Ski Track Maker (including classic track setter 1pc)		991,67



CLASSIC TRACK SETTER

Working width 1100mm (600mm without extensions)
Width of the classic track 230mm
Dimensions of the product Width 1100mm x Height 120mm x Lenght 1270mm
Packaging dimensions Width 600mm x Height 120mm x Lenght 750mm
Weight 25kg



Product	Code	Price (EUR)
Classic Track Setter	47.100	225,00

TRAILER "Offroad PRO 500"

Material	Frame / axle parts are galvanized or powder-coated steel Cargo box parts are zinc coated steel
Cargo box dimensions	Width 1000mm x Length 1480mm x Height 600mm
Trailer full dimensions	Width 1200mm x Length 2580mm x Height 1100mm
Packed dimensions (on the pallet)	Width 1200mm x Length 1600mm x Height 650mm (1.25cbm)
Tyres	All terrain type, 22 x 11 - 8
Weight	120 kg
Load capacity	500 kg
Other information	Manual lift Stand Front and rear boards of the cargo box are easily removable. Side board extensions are removable. Possible to use as a timber trailer, with 2.7m total length of the carriage. Comes with CE-markings and safety instructions.

Product	Code	Price (EUR)
Trailer "Offroad PRO 500"	35.0000	741,67



TRAILER "Offroad PRO 1000"

Material	Galvanized / powder-coated steel
Dimensions	Cargo box: width 1100mm x length 2000mm x height 660mm Trailer total: width 1200mm x length 3000mm x height 1000mm
Packed dimensions	Width 1200mm x Length 1500mm x Height 1000mm
Tyres (x 4)	All terrain type, 22 x 11 - 8
Weight	Approx 170 kg
Load capacity	1000 kg
Other information	Manual lift on cargo box. Removable front and rear hatch on cargo box. Removable side port extensions on box. Can also be used as a timber trailer. Comes with CE-markings and safety instructions.

Product	Code	Price (EUR)
Trailer "Offroad PRO 1000"	32.0000	1408,33



TRAILER "ECO 300"

Material Frame / axle parts are galvanized or powder-coated steel
Cargo box is zinc coated steel

Cargo box Width 950mm x Height 450mm x Length 1300mm

Trailer full dimensions Width 1100mm x Height 900mm x Length 1800mm

Tyres Off-road type, 22 x 11 - 8

Weight 80 kg

Load capacity 300 kg

Other info Manual lift
Front and rear boards of the cargo box are easily removable.
Optional cargo box extensions available separately (product code 40.1000).
Optional hitch / pull bar extension with 360 degree rotating hitch coupling available separately (product code 40.2000).
Product imported and improved / assembled by Iron Baltic.

Transport dimensions (packed) 950mm x 550mm x 1300mm (0.7 cbm)



40.0000



40.0000B

Product	Code	Price (EUR)
Trailer "ECO 300"	40.0000	387,50
Trailer "ECO 300" + pull bar extension	40.0000A	437,50
Trailer "ECO 300" + box extended cage	40.0000B	462,50
Trailer "ECO 300" + pull bar extension + box extended cage	40.0000C	512,50
Box extended cage (Height 300mm)	40.1000	75,00
Pull bar extension / rotating hitch coupling	40.2000	50,00



40.0000A



40.0000C

TRAILER "ECO 1000"

Material Powder-coated steel

Cargo box Width 1250mm x Height 850mm x Length 1750mm

Trailer full dimensions Width 1250mm x Height 1300mm x Length 2800mm

Tyres Off-road type, 22 x 11 - 8

Weight 220 kg

Load capacity 1000 kg

Other info Lift with manual winch.
Tandem axle / 4 wheels.
Cargo box extensions (cage) - 300mm.
Front and rear boards of the cargo box are easily removable.
Product imported and improved / assembled by Iron Baltic.

Transport dimensions (packed) 1250mm x 600mm x 1800mm

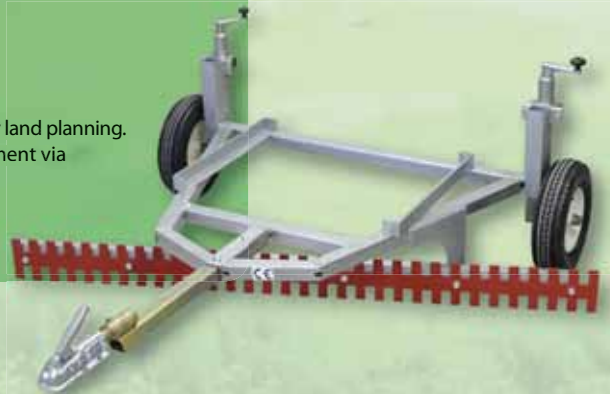


Product	Code	Price (EUR)
Trailer "ECO 1000"	38.0000	991,67



GRADER

Material	Galvanized steel
Trailer full dimensions	Width 1780mm x Height 720mm x Length 1950mm
Packed dimensions	Width 1400mm x Height 600mm x Length 1100mm
Tyres	4.80 / 4.00 – 8"
Weight	85 kg
Other info	Grader for uncomplicated road improvement works or land planning. Transportation position and working height adjustment via support wheels. Frame for mounting additional weight. Product imported and improved / assembled by Iron Baltic.



Product	Code	Price (EUR)
Grader	44.0000	491,67

BALE TRAILER

Material	Galvanized steel
Trailer full dimensions	Width 1700mm x Length 2200mm x Height 1000mm
Packed dimensions	Width 1300mm x Length 2000mm x Height 500mm
Tyres	Off-road type, 22 x 11 - 8
Weight	80 kg
Other info	Trailer for transporting hay bales. Loading/unloading bales with hand winch. (The hand winch is included in the package). Product imported and improved / assembled by Iron Baltic.



Product	Code	Price (EUR)
Bale Trailer	43.0000	606,67

DISC CULTIVATOR

Working width	1200mm
Working depth	100 - 150mm
Disc quantity	8 disc blades
Disc diameter	460mm
Disc thickness	4mm
Cutting angle	20 degrees
Weight	140 kg
Other info	Adjustable height tongue allows using various sizes of ATVs, UTVs and compact tractors. Transition from off road transport to cutting with an easy flip-over design. Frame can be weighted for greater digging depth. Recommended for commercial food plot farms, large gardens, row cultivation, and yard prep work. Product imported and improved / assembled by Iron Baltic.

Product	Code	Price (EUR)
Disc cultivator	51.1000	550,00



FLAIL MOWERS

Dimensions 1760mm x 1720mm x height 900mm
Packed dimensions 1900mm x 850mm x height 820mm
Weight 230 ... 250 kg
Cut width 115 cm
Working speed 2-10 km/h
Engine 13 hp Honda GX 390
 15 hp Loncin G420F
 18HP Briggs & Stratton V-Twin Vanguard
Blades Y-blades - for rough cutting, thick grass fields etc
Other info Flail mower to be used with an ATV/UTV or a small tractor.
 Cuts effectively large grass fields, lawn or roadsides.
 Easily adjustable cut height.
 Easy and quick tow behind transportation from one working field to another due quick set transportation position.
 Possible to adjust the working position from directly behind the ATV to sideways of the ATV (towing machine).
 Anti scalp rear roller.
 Complete, illustrated user/operator & CE safety instructions included.
 Product imported and improved / assembled by Iron Baltic.



Product	Code	Price (EUR)
Flail mower 13HP (Honda GX390)	27.1000	1875,00
Flail mower 15HP (Loncin G420F)	27.2000	1625,00
Flail mower 18HP (B&S V-Twin Vanguard)	27.3000	2325,00
Spare parts	Code	Price (EUR)
Y-blade (for rough cutting)	27.001	2,50
Hammer blade (for finishing cutting)	27.002	2,67
Clutch assembly	27.003	75,00
Belt	27.005	5,00



FINISHING MOWER

Cutting width 1500mm
Working efficiency 1500-2500m²/h
Packing dimensions 1450mm x 1050mm x height 1100mm
Engine power 16HP Loncin with electric start
Cutting height 25 - 185mm
Weight 220kg
Number of blades 3
Other info Finishing mower to be used with an ATV/UTV or a small tractor.
 The mower is suitable for mowing large flat fields.
 Easily adjustable cut height.
 Complete, illustrated user/operator & CE safety instructions included.
 Product imported and improved / assembled by Iron Baltic.



Product	Code	Price (EUR)
Finishing mower 16HP (Loncin)	50.1000	1600,00

LOG SPLITTER

Max force	30 ton
Log capacity	length 620mm / diameter 500mm
Return seconds	14 sec
Engine	9HP Lifan
Pump	16 MPa
Pressure	240 bar
Hydraulic tank	26L
Packing size	Length 2100mm x Width 600mm x Height 580mm
Dimensions	Length 2200mm x Width 500mm x Height 550mm
Wedge style	4-way
Weight	270kg
Other info	

Efficient tool for splitting large logs of wood. Adjustable to horizontal and vertical working positions. Control valve locks into reverse and automatically returns to start position after the log has been split. Complete, illustrated user/operator & CE safety instructions included.

Product	Code	Price (EUR)
Log Splitter 9HP Lifan	49.1000	1375,00



LOG HAULER

Material	Galvanized / powder-coated steel
Dimensions	Length 1700mm x Width 1200mm x Height 1300mm
Packed dimensions	Length 1200mm x Width 1200mm x Height 1200mm
Tyres	All terrain type 22 x 11 – 8
Weight	60 kg
Load capacity	500 kg
Other info	

Includes hand winch or electric ATV winch for pulling logs out of the woods.

Hang / tie system to carry larger logs, rotatory lower frame to carry lighter timber.

Tie down chain and rope to fix the logs onto the hauler frame.

Safety and user manual included.

Product	Code	Price (EUR)
Log Hauler with electric winch kit	31.1000	825,00
Log Hauler with hand winch kit	31.2000	658,33



TIMBER TRAILER "IRON 1000"

Material	Galvanized / powder-coated steel
Trailer full dimensions	Width 1200mm x Height 1100mm x adjustable length 2800mm - 4000mm
Packed dimensions	Width 1000mm x Length 1500mm x Height 800mm (1.2 cbm)
Tyres (x 4)	All terrain type, 22 x 11 - 8
Weight	130 kg
Load capacity	1000 kg
Other info	360 degrees rotating hitch coupling. Adjustable trailer length. Max possible length of carriage is 3m. Possible to use with the additional large cargo box. Tandem axle with 4 wheels. Supplied with CE-markings and safety instructions.



Product	Code	Price (EUR)
Timber Trailer "Iron 1000"	23.0000	1075,00
Timber Trailer "Iron 1000" + Cargo box	23.3000	1875,00
Cargo box set	23.2000	800,00

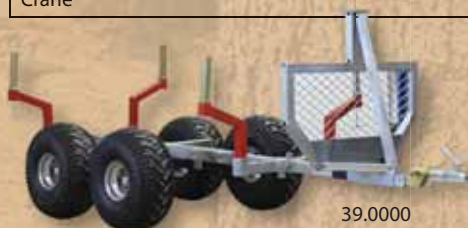


TIMBER TRAILER "ECO 700"

Material	Galvanized / powder-coated steel
Trailer full dimensions	Width 1300mm x Height 1900mm x adjustable length 2500mm - 3500mm
Packed dimensions	Width 1000mm x Length 2000mm x Height 1200mm
Tyres	4 x all terrain type, 22 x 11 - 8"
Weight	300 kg
Load capacity	700 kg
Other info	360 degrees rotating hitch coupling. Adjustable trailer length. Max possible length of carriage is 3m. Removable cargo box (manual lift or lifting via supplied crane). Crane for pulling the logs or lifting the cargo box. Tandem axle with 4 wheels. Product imported and improved/assembled by Iron Baltic.



Product	Code	Price (EUR)
Timber trailer "ECO 700"	39.0000	658,33
Timber trailer "ECO 700" + Crane	39.0000A	841,67
Timber trailer "ECO 700" + Cargo box	39.0000B	983,33
Timber trailer "ECO 700" + Crane + Cargo box	39.0000C	1166,67
Cargo box	39.1000	325,00
Crane	39.2000	183,33



Hydraulic timber trailer "FORESTER 3400"

Trailer dimensions	Width 1360mm x height 1500mm x length 3800mm
Loading area	Width 1250mm x height 750mm x length 2500mm x (ca 2.5m ³)
Total weight	600kg
Loading capacity	1500kg
Maximum reach of the crane	3.4m
Maximum weight lifting at 3.4m	200kg
Maximum weight lifting at 1.7m	350kg
Rotator	Baltrators GR10
Rotation radius	+/- 90°
Rotation radius of the rotator	infinite
Grapple area	0.08m ²
Maximum opening of grapple	750mm
Oil pressure	160bar
Tyres	Low pressure tyres 22 / 11 – 8"
Coupling	360 degrees rotatory coupling for 50mm hitch ball



4x4 hydraulic drive system

Speed 3 – 5 km/h
Waterproof electric remote control

Hydraulic drive system helps the ATV move in hard conditions like deep snow, mud or stumps.



Hydraulic winch

Rated line pull 800kg
Speed 10 – 25m/min
Remote control area 30m

The winch helps to pull logs closer from inaccessible and dangerous areas.
Radio controlled hydraulic winch placed on the crane construction.



Hydraulic unit

7.5HP 4-stroke petrol engine with electric starter and battery
Oil tank 8 litres
Dimensions 350mm x 350mm x 700mm
Weight 30 kg

The hydraulic unit is fastened on the front rack of an ATV or on the back of an UTV or a pick-up truck.
Provides the necessary oil flow and pressure to operate the crane and all the accessories.



Additional information:

Galvanized and powder-coated steel construction.
2 pairs of log bolster posts in standard kit (possible to add extra log bolster posts for smaller timber).
Log bolster posts can be moved on the main frame to adjust the load balance of the trailer.
Suitable for transporting timber up to 5 metres of length.
Most of the hydraulic distribution moves through the frame of the trailer, making for good protection against damage.
Safe unloading of timber provided through hydraulic support legs.
Complete, illustrated user / operator & CE safety instructions included.

Product	Code	Price (EUR)
Hydraulic timber trailer "Forester 3400"	45.0000	6833,33



LOG BOLSTER POSTS KIT

Mounting additional posts allows transporting shorter logs.

Material	Galvanized and powder-coated steel construction
Dimensions	1300mm x 800mm
Weight	20kg

Product	Code	Price (EUR)
Log bolster posts kit	45.4000	106,67



TIPPING BOX

Galvanized and powder-coated steel construction. The tipping box can be easily mounted on the trailer by removing the logging post on the trailer and lifting the dumper onto the trailer. Dumper dumps by 2 hydraulic cylinders.

Dimensions WxHxL	1400mm x 400mm x 2100mm
Capacity	1500kg
Tipping angle	46°
Weight	200kg

Product	Code	Price (EUR)
Tipping box set	45.2000	1408,33



EARTH BUCKET

Designed to lift and dig soft soil.

Capacity	60 litres
Weight	60kg
Dimensions	420mm x 420mm x 560mm

Product	Code	Price (EUR)
Earth bucket set	45.3000	350,00



FRONT PROTECTIONS

Material Corrosion resistant, brushed aluminium alloy
Thickness 4mm
Info Full protection for front part.
 Holes in protection for radiator cooling and winch mounting.

Kawasaki	Code	Price (EUR)
KVF650 BruteForce 4x4 Rigid (... - 2012)	09.100	207,50
KVF750 BruteForce 4x4 (... - 2012)	09.100	207,50
KVF650 BruteForce 4x4 Rigid (2012 - ...)	09.700	207,50
KVF750 BruteForce 4x4 (2012 - ...)	09.700	207,50
Suzuki	Code	Price (EUR)
LT-A 450 KingQuad	09.200	207,50
LT-A 500 KingQuad	09.200	207,50
LT-A 700 KingQuad	09.200	207,50
LT-A 750 KingQuad	09.200	207,50
LT-A 500 AXi KingQuad EPS	09.200	207,50
LT-A 750 AXi KingQuad EPS	09.200	207,50
Yamaha	Code	Price (EUR)
550 Grizzly (... - 2013)	09.300	220,83
660 Grizzly	09.300	220,83
700 Grizzly (... - 2013)	09.300	220,83



CAN-AM G2 RENEGADE LUGGAGE RACK

Material Aluminium carrier frame / 15mm thick plastic cargo rack
Weight 6kg
Info Fitting hardware and installation manual included.
 Quick and easy installation!

BRP Can-Am	Code	Price (EUR)
Renegade 500 G2	14.1200	232,50
Renegade 800R G2	14.1200	232,50
Renegade 1000 G2	14.1200	232,50



UNIVERSAL CARGO BOX

Material Aluminium alloy
Thickness 3mm
Weight 6kg
Surface Powder-coated
Dimensions Width 420mm x Length 1000mm x Height 140mm
Info Fitting hardware and installation manual included.
 Quick and easy installation!

BRP Can-Am	Code	Price (EUR)
Universal Carco Box	14.1100	140,83



WINCH ROPE SLIDER

Material Aluminium alloy
Length 160mm
Width 55mm



Suitable for winches up to 3500lbs.

BRP Can-Am	Code	Price (EUR)
Winch rope slider	14.001	20,00



ROOFS

Material Aluminium alloy
Thickness 4mm
Surface powder-coated
Info Provides protection from wind, rain, snow and off-road hazards. Quick and easy installation.

CFMOTO	Roof	Price (EUR)
ZFORCE 800 EX (Z8 EX)	26.700	232,50
UFORCE 800 (800 Tracker)	26.400	190,00
Polaris	Roof	Price (EUR)
900 RZR XP	26.200	190,00
EV Ranger	26.100	190,00
400 Ranger	26.100	190,00
570 Ranger	26.500	179,17
800 Ranger	26.300	190,00
800 Ranger 6x6	26.600	232,50
900 Diesel Ranger	26.300	190,00



WINDSHIELDS

Material Polycarbonate (Makrolon)
Thickness 5mm
Info Strong, durable polycarbonate construction with UV protection. Provides protection from wind, rain, snow and off-road hazards. Quick and easy installation.

CFMOTO	Front full windshield	Price (EUR)	Front half windshields	Price (EUR)	Rear windshield	Price (EUR)
ZFORCE 800 (Z8)	25.1300	215,83	25.1400	106,67		
UFORCE 800 (800 Tracker)	25.800	215,83	25.900	106,67		
Polaris	Front full windshield	Price (EUR)	Front half windshields	Price (EUR)	Rear windshield	Price (EUR)
900 RZR XP	25.300	215,83			25.400	158,33
EV Ranger	25.100	215,83			25.200	158,33
400 Ranger	25.100	215,83			25.200	158,33
570 Ranger	25.1000	215,83	25.1100	106,67	25.1200	145,83
800 Ranger	25.500	215,83	25.600	106,67	25.700	183,33
900 Diesel Ranger	25.500	215,83	25.600	106,67	25.700	183,33

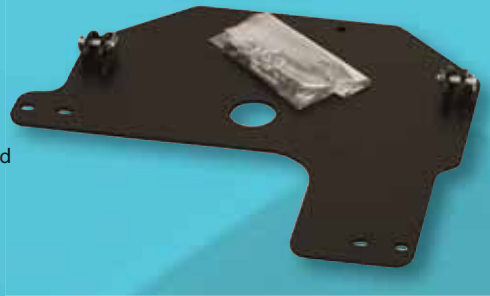


ADAPTERS

SNOW PLOW MOUNTING KITS

Material Steel
Surface Galvanized / powder-coated

Model specific mounting kits for Iron Baltic snow plows.



FRONT WINCH MOUNTING KITS

Material Steel
Surface Galvanized / powder-coated

Model specific mounting kits for "Warn", "ComeUp" and "Bronco" winches.



REAR WINCH MOUNTING KITS

Material Steel
Surface Galvanized / powder-coated

Model specific mounting kits for "Warn", "ComeUp" and "Bronco" winches.



HITCH-BALL MOUNTING KITS

Material Steel
Surface Galvanized / powder-coated

Model specific adapter for hitch-ball connection.

Adapter extends the hitch-ball joint further away from the ATV frame so that the trailer has more manoeuvring room.



TRACKS MOUNTING KITS

Material Steel
Surface Galvanized / powder-coated

Model specific mounting kits for "Tatou" and "HiSun" tracks.



Access	Plow mount	Price (EUR)	Front winch mount	Price (EUR)	Rear winchmount	Price (EUR)	Hook ext	Price (EUR)	Tracks mount	Price (EUR)
AX 700 4x4 EFI	03.4400	58,33								
Arctic Cat	Plow mount	Price (EUR)	Front winch mount	Price (EUR)	Rear winch mount	Price (EUR)	Hook ext	Price (EUR)	Tracks mount	Price (EUR)
500	03.4600	62,50			05.5100	65,00			24.9000	132,50
500 XT	03.4600	62,50			05.5100	65,00			24.9000	132,50
550i	03.4600	62,50			05.5100	65,00			24.9000	132,50
550i XT	03.4600	62,50			05.5100	65,00			24.9000	132,50
700	03.4600	62,50			05.5100	65,00			24.9000	132,50
700 XT	03.4600	62,50			05.5100	65,00			24.9000	132,50
550i Limited	03.4600	62,50			05.5100	65,00			24.9000	132,50
700 Limited	03.4600	62,50			05.5100	65,00			24.9000	132,50
700 MudPro Limited	03.4600	62,50			05.5100	65,00			24.9000	132,50
1000 XT	03.4500	62,50			05.5100	65,00			24.9000	132,50
TRV 500	03.4200	62,50			05.5100	65,00			24.9000	132,50
TRV 550 XT	03.4200	62,50			05.5100	65,00			24.9000	132,50
TRV 550 Limited	03.4200	62,50			05.5100	65,00			24.9000	132,50
TRV 700 XT	03.4200	62,50			05.5100	65,00			24.9000	132,50
TRV 700 Diesel	03.4200	62,50							24.9000	132,50
TRV 700 Limited	03.4200	62,50			05.5100	65,00			24.9000	132,50
TRV 1000 Limited	03.4200	62,50			05.5100	65,00			24.9000	132,50
TRV 1000 MudPro Limited	03.4200	62,50			05.5100	65,00			24.9000	132,50
1000i Wildcat	-		-		-		-		-	
BRP Can-Am	Plow mount	Price (EUR)	Front winch mount	Price (EUR)	Rear winch mount	Price (EUR)	Hook ext	Price (EUR)	Tracks mount	Price (EUR)
Outlander 500	03.1500	70,00	05.800	55,00	05.3000	55,00	15.300	55,00		
Outlander 500 MAX	03.1500	70,00	05.800	55,00	05.3000	55,00	15.300	55,00		
Outlander 500 G2	03.3500	62,50			05.5000	65,00				
Outlander 500 MAX G2	03.3500	62,50			05.5000	65,00				
Outlander 650	03.1500	70,00	05.800	55,00	05.3000	55,00	15.300	55,00		
Outlander 650 MAX	03.1500	70,00	05.800	55,00	05.3000	55,00	15.300	55,00		
Outlander 650 G2	03.3500	62,50			05.5000	65,00				
Outlander 650 MAX G2	03.3500	62,50			05.5000	65,00				
Outlander 650 Xmr G2	03.3500	62,50			05.5000	65,00				
Outlander 800R	03.1500	70,00	05.800	55,00	05.3000	55,00	15.300	55,00		
Outlander 800R MAX	03.1500	70,00	05.800	55,00	05.3000	55,00	15.300	55,00		

Recommended retail prices without tax valid from 01.05.2014 through 31.12.2014

BRP Can-Am	Plow mount	Price (EUR)	Front winch mount	Price (EUR)	Rear winch mount	Price (EUR)	Hook ext	Price (EUR)	Tracks mount	Price (EUR)
Outlander 800R G2	03.3500	62,50			05.5000	65,00				
Outlander 800R MAX G2	03.3500	62,50			05.5000	65,00				
Outlander 1000 G2	03.3500	62,50			05.5000	65,00				
Outlander 1000 Xmr G2	03.3500	62,50			05.5000	65,00				
Outlander 1000 MAX	03.1500	70,00	05.800	55,00	05.3000	55,00	15.300	55,00		
Renegade 500	03.1500	70,00	05.1100	65,00	05.3000	55,00	15.300	55,00		
Renegade 500 G2	03.3500	62,50	05.4800	80,00	05.5000	65,00				
Renegade 800R	03.1500	70,00	05.1100	65,00	05.3000	55,00	15.300	55,00		
Renegade 800R G2	03.3500	62,50	05.4800	80,00	05.5000	65,00				
Renegade 1000 G2	03.3500	62,50	05.4800	80,00	05.5000	65,00				
Commander 800R	03.3800	75,00								
Commander 1000	03.3800	75,00								
Maverick 1000	03.4700	80,00	05.5600	80,00						
Cectek	Plow mount	Price (EUR)	Front winch mount	Price (EUR)	Rear winch mount	Price (EUR)	Hook ext	Price (EUR)	Tracks mount	Price (EUR)
500 EFI Gladiator	03.1600	62,50								
500 EFI Quadrift	03.1600	62,50								
500 EFI KingCobra	03.1600	62,50	05.4000	55,00						
CFMOTO	Plow mount	Price (EUR)	Front winch mount	Price (EUR)	Rear winch mount	Price (EUR)	Hook ext	Price (EUR)	Tracks mount	Price (EUR)
500 - 2 (short models)	03.1800	62,50	05.3600	55,00	05.4900	55,00	15.800	60,00	24.7000	132,50
500 - 2A (long models)	03.1800	62,50	05.3600	55,00	05.4900	55,00	15.800	60,00	24.7000	132,50
CFORCE 500 (X5 short models)	03.1800	62,50	-		-		-		24.7000	132,50
CFORCE 500 (X5 long models)	03.1800	62,50	-		-		-		24.7000	132,50
CFORCE 600 (X6 short models)	03.1800	62,50	-		-		-		24.7000	132,50
CFORCE 600 (X6 long models)	03.1800	62,50	-		-		-		24.7000	132,50
CFORCE 800 (X8)	03.3700	62,50	-		-		-		24.7000	132,50
CFORCE 800 LUX (X8 Lux)	03.3700	62,50	-		-		-		-	
ZFORCE 600 (Z6)	03.2900	70,00	05.3700	55,00	-		-		-	
ZFORCE 600 EX (Z6 EX)	-		05.3700	55,00	-		-		-	
ZFORCE 800 EX (Z8 EX)	03.5200	75,00			05.6300	55,00	15.1700	106,67	-	
UFORCE 800 (800 Tracker)	03.4100	66,67	-		-		15.1300	60,00	-	

Recommended retail prices without tax valid from 01.05.2014 through 31.12.2014

Dinli	Plow mount	Price (EUR)	Front winch mount	Price (EUR)	Rear winch mount	Price (EUR)	Hook ext	Price (EUR)	Tracks mount	Price (EUR)
600 Prime	03.2500	58,33	-		05.2500	55,00	15.100	60,00	24.1000	132,50
DL700	03.2500	58,33	-		05.2500	55,00	15.100	60,00	24.1000	132,50
DL702	03.2500	58,33	-		05.2500	55,00	15.100	60,00	24.1000	132,50
DL702L	03.2500	58,33	-		05.2500	55,00	15.100	60,00	24.1000	132,50
DL704	03.2500	58,33	-		05.2500	55,00	15.100	60,00	24.1000	132,50
DL703	03.2500	58,33	-		05.2500	55,00	15.100	60,00	24.1000	132,50
GOES	Plow mount	Price (EUR)	Front winch mount	Price (EUR)	Rear winch mount	Price (EUR)	Hook ext	Price (EUR)	Tracks mount	Price (EUR)
520	03.1800	62,50	-		05.4900	55,00	15.800	60,00	24.7000	132,50
520 MAX	03.1800	62,50	-		05.4900	55,00	15.800	60,00	24.7000	132,50
525	03.1800	62,50	05.5500	35,00	05.3400	100,00	05.3400	100,00	24.7000	132,50
525 MAX	03.1800	62,50	05.5500	35,00	05.3400	100,00	05.3400	100,00	24.7000	132,50
625	03.1800	62,50	05.5500	35,00	05.3400	100,00	05.3400	100,00	24.7000	132,50
625 MAX	03.1800	62,50	05.5500	35,00	05.3400	100,00	05.3400	100,00	24.7000	132,50
UTX 520	03.3000	62,50	-		-		-	0,00	-	
HiSUN	Plow mount	Price (EUR)	Front winch mount	Price (EUR)	Rear winch mount	Price (EUR)	Hook ext	Price (EUR)	Tracks mount	Price (EUR)
400cc	-		-		-		-		-	
700 UTV	03.3600	62,50	-		-		-		-	
Honda	Plow mount	Price (EUR)	Front winch mount	Price (EUR)	Rear winch mount	Price (EUR)	Hook ext	Price (EUR)	Tracks mount	Price (EUR)
450 ES / S	-		05.1900	55,00	-		-		-	
TRX 420 FA (... - 2013)	03.900	62,50	05.5400	55,00	-		-		-	
TRX 420 FE / FM (... - 2013)	03.900	62,50	05.5400	55,00	-		15.1100	82,50	-	
TRX 420 FA / FE / FM (2014 - ...)	03.3200	62,50	05.6100	55,00	-		15.1100	82,50	-	
TRX 500 FA	03.1300	58,33	05.600	55,00	-		-		24.6000	132,50
TRX 500 FE (... - 2012)	03.1300	58,33	05.600	55,00	-		-		24.6000	132,50
TRX 500 FE (2012 - 2013)	03.3200	62,50	05.4300	55,00	-		-		-	
TRX 500 FE (2014 - ...)	03.3200	62,50	05.6100	55,00	-		15.1100	82,50	-	
TRX 650 Rincon	03.1200	58,33	05.500	55,00	05.3200	65,00	05.3200	65,00	-	
TRX 680 Rincon	03.1200	58,33	05.500	55,00	05.3200	65,00	05.3200	65,00	-	
Kawasaki	Plow mount	Price (EUR)	Front winch mount	Price (EUR)	Rear winch mount	Price (EUR)	Hook ext	Price (EUR)	Tracks mount	Price (EUR)
KVF360 4x4	03.2300	58,33	05.1800	55,00	-		-		-	
KVF650 BruteForce 4x4 Rigid	03.300	62,50	05.100	55,00	-		-		-	
KVF750 BruteForce 4x4	03.300	62,50	05.100	55,00	05.2800	65,00	05.2800	106,67	24.5000	132,50

Recommended retail prices without tax valid from 01.05.2014 through 31.12.2014

Kymco	Plow mount	Price (EUR)	Front winch mount	Price (EUR)	Rear winch mount	Price (EUR)	Hook ext	Price (EUR)	Tracks mount	Price (EUR)
MXU 250	03.2600	58,33	-		-		-		-	
MXU 300	03.2600	58,33	-		-		-		-	
MXU 500	03.1120	62,50	-		-		-		-	
UXV 500	03.2700	70,00	-		-		-		-	
Linhai	Plow mount	Price (EUR)	Front winch mount	Price (EUR)	Rear winch mount	Price (EUR)	Hook ext	Price (EUR)	Tracks mount	Price (EUR)
300	03.200	62,50	-							
400	03.200	62,50	-							
400 IRS	03.2800	62,50	05.3500	55,00						
500 EFI	03.200	62,50	-							
550 EFI V-Twin	03.2800	62,50	05.5700	35,00						
600 EFI	03.2800	62,50	-							
Keeway (Leone Mastiff)	Plow mount	Price (EUR)	Front winch mount	Price (EUR)	Rear winch mount	Price (EUR)	Hook ext	Price (EUR)	Tracks mount	Price (EUR)
Leone Mastiff XY 500	03.1000	62,50	-		-		-		24.8000	132,50
Leone Mastiff XY 500 Long	03.1000	62,50	-		-		-		24.8000	132,50
Polaris	Plow mount	Price (EUR)	Front winch mount	Price (EUR)	Rear winch mount	Price (EUR)	Hook ext	Price (EUR)	Tracks mount	Price (EUR)
400 Sportsman (2011 - ...)		0,00	05.3900	55,00					24.3000	132,50
500 Sportsman (... - 2010)	03.1560	62,50	05.1200	55,00	05.6000	70,00			24.3000	132,50
500 Sportsman (2011 - ...)	03.1560	62,50	05.3900	55,00	05.5300	70,00	15.1200	106,67	24.3000	132,50
570 Sportsman	03.5000	70,00	-		05.5300	70,00	15.1200	106,67	24.3000	132,50
800 Sportsman (... - 2010)	03.1100	66,67	05.1200	55,00					24.3000	132,50
800 Sportsman (2011 - ...)	03.1560	62,50	05.3900	55,00	05.5300	70,00	15.1200	106,67	24.3000	132,50
500 X2 Sportsman	03.2200	62,50								
800 X2 Sportsman	03.1900	58,33								
550 XP Sportsman	03.1700	58,33	05.3100	55,00	05.2700	100,00	15.1200	106,67		
850 XP Sportsman	03.1700	58,33	05.3100	55,00	05.2700	100,00	15.1200	106,67		
550 XP X2	03.1700	58,33	05.3100	55,00	05.2700	100,00	15.1200	106,67		
850 XP X2	03.1700	58,33	05.3100	55,00	05.2700	100,00	15.1200	106,67		
850 Scrambler	03.1700	58,33			05.2700	100,00	15.1200	106,67		
800 RZR	03.2100	70,00	05.1700	58,33	05.2400	65,00				
800 RZR S	03.2100	70,00	05.1700	58,33	05.2400	65,00				
800 BigBoss	03.1100	66,67	05.3900	55,00	-		15.1200	106,67		
900 RZR XP	03.3300	70,00	05.4400	55,00	05.4500	160,00				

Recommended retail prices without tax valid from 01.05.2014 through 31.12.2014

EV Ranger	03.3100	62,50	05.4200	65,00	05.4100	70,00	15.1400	106,67		
400 Ranger	03.3100	62,50	05.4200	65,00	05.4100	70,00	15.1400	106,67		
570 Ranger	03.5100	70,00	05.4200	65,00	05.6200	80,00	15.1400	106,67		
800 Ranger	03.3400	70,00	05.4200	65,00	05.4600	80,00	15.1400	106,67		
800 Ranger 6x6	-		05.4200	65,00	-		15.1400	106,67		
900 XP Ranger	03.4800	62,50	05.5900	55,00	05.5800	80,00	15.1400	106,67		
900 Diesel Ranger	03.3400	70,00	05.4200	65,00	05.4600	80,00	15.1400	106,67		
Suzuki	Plow mount	Price (EUR)	Front winch mount	Price (EUR)	Rear winch mount	Price (EUR)	Hook ext	Price (EUR)	Tracks mount	Price (EUR)
400 Eiger	03.200	62,50	05.1600	55,00	-		-		-	
LT-A 450 KingQuad	03.200	62,50	05.300	55,00	05.2600	55,00	15.200	60,00	24.4000	132,50
LT-A 500 KingQuad	03.200	62,50	05.300	55,00	05.2600	55,00	15.200	60,00	24.4000	132,50
LT-A 700 KingQuad	03.200	62,50	05.300	55,00	05.2600	55,00	15.200	60,00	24.4000	132,50
LT-A 750 KingQuad	03.200	62,50	05.300	55,00	05.2600	55,00	15.200	60,00	24.4000	132,50
LT-A 500 AXi KingQuad EPS	03.200	62,50	05.300	55,00	05.2600	55,00	15.200	60,00	24.4000	132,50
LT-A 750 AXi KingQuad EPS	03.200	62,50	05.300	55,00	05.2600	55,00	15.200	60,00	24.4000	132,50
SYM	Plow mount	Price (EUR)	Front winch mount	Price (EUR)	Rear winch mount	Price (EUR)	Hook ext	Price (EUR)	Tracks mount	Price (EUR)
600 QuadRider / QuadLander	03.1110	62,50	05.900	55,00	-		-		-	
TGB	Plow mount	Price (EUR)	Front winch mount	Price (EUR)	Rear winch mount	Price (EUR)	Hook ext	Price (EUR)	Tracks mount	Price (EUR)
425 Blade	03.2400	58,33	-		-		-		-	
Yamaha	Plow mount	Price (EUR)	Front winch mount	Price (EUR)	Rear winch mount	Price (EUR)	Hook ext	Price (EUR)	Tracks mount	Price (EUR)
450 Grizzly (2006 - 2008)	03.2000	58,33	05.1400	55,00	-					
450 Grizzly (2009 - 2010) not EPS	03.600	62,50	05.1400	55,00	-		-			
550 Grizzly	03.600	62,50	05.200	55,00	-		15.1500	106,67	24.2000	132,50
660 Grizzly	03.600	62,50	05.1300	55,00	-					
700 Grizzly (... - 2013)	03.600	62,50	05.200	55,00	-		15.1500	106,67	24.2000	132,50
700 Grizzly (2014 - ...)	03.600	62,50	05.200	55,00	-		15.1500	106,67		

Recommended retail prices without tax valid from 01.05.2014 through 31.12.2014



IRON BALTIC OÜ
Pöldmäe tee 1, Vatsla 76915
ESTONIA

Tel: +372 653 3711
sales@ironbaltic.ee

WWW.IRONBALTIC.COM

